



**memmert**  
Experts in Thermostatics

# Heating and drying ovens

COMMUNICATION. COMFORT. SIMPLY GREAT.



UNIVERSAL OVEN U

PASS-THROUGH OVEN UF TS

PARAFFIN OVEN UNpa

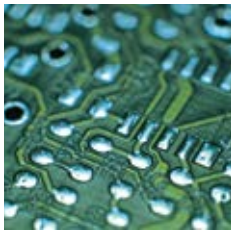
STERILISER S

VACUUM OVEN VO

COOLED VACUUM OVEN VOcool

100% ATMOSAFE. MADE IN GERMANY.

[www.memmert.com](http://www.memmert.com) | [www.atmosafe.net](http://www.atmosafe.net)



# Simply boundless. Boundlessly simple.

Drying, heating, ageing, testing, sterilising,  
burning-in, curing, storing. 100% AtmoSAFE.

From very small to very large! 32 litres or 1060 litres chamber volume? Standard applications or high demand for functionality, programming and documentation? In any case, all Memmert heating and drying ovens feature user-friendliness and state-of-the-art communication interfaces as a basic. Each individual appliance complies with the strict requirements of DIN 12880:2007-05 and is equipped with a maximum of safety functions. Each individual Memmert heating and drying oven is 100% AtmoSAFE.

**UNIVERSAL OVEN U**

PAGE 4 TO 5

TECHNICAL DATA

PAGE 6 TO 7

Drying, burning-in, ageing, vulcanising, degassing,  
curing, burn-in testing, conditioning, heated storage

**PASS-THROUGH OVEN UF TS**

PAGE 8 TO 9

TECHNICAL DATA

PAGE 10 TO 11

In-line curing and tempering

**PARAFFIN OVEN UNpa**

PAGE 12 TO 13

TECHNICAL DATA

PAGE 14 TO 15

Tempering of embedding media like paraffin and wax

**STERILISER S**

PAGE 16 TO 17

TECHNICAL DATA

PAGE 18 TO 19

Sterilising of instruments and laboratory glass

**VACUUM OVEN VO**

PAGE 20 TO 21

TECHNICAL DATA

PAGE 22 TO 23

Drying, burning-in, ageing, curing, degassing,  
conditioning, oxygen-free storing

**COOLED VACUUM OVEN VOcool**

PAGE 24 TO 25

TECHNICAL DATA

PAGE 26 TO 27

Drying, burning-in, ageing, curing, degassing,  
conditioning, oxygen-free storing

**SOFTWARE FOR MODELS**

U, UF TS, UNpa, S, I, ICOMed, ICP, IPP, IPS, HPP, ICH PAGE 28

AtmoCONTROL

**OPTIONS AND ACCESSORIES**

PAGE 28 TO 30

Available for all products

**FEATURES OF MODEL VARIANTS**

PAGE 31

SingleDISPLAY and TwinDISPLAY

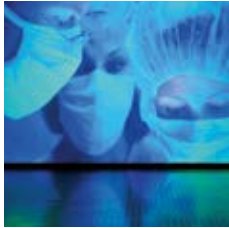


Steriliser SN and SF with SingleDISPLAY  
 Steriliser SNplus and SFplus with TwinDISPLAY  
 Natural convection or forced ventilation  
 AtmoCONTROL software

Model sizes:  
 30 / 55 / 75 / 110 / 160 / 260 / 450 / 750  
 +30 °C to +250 °C

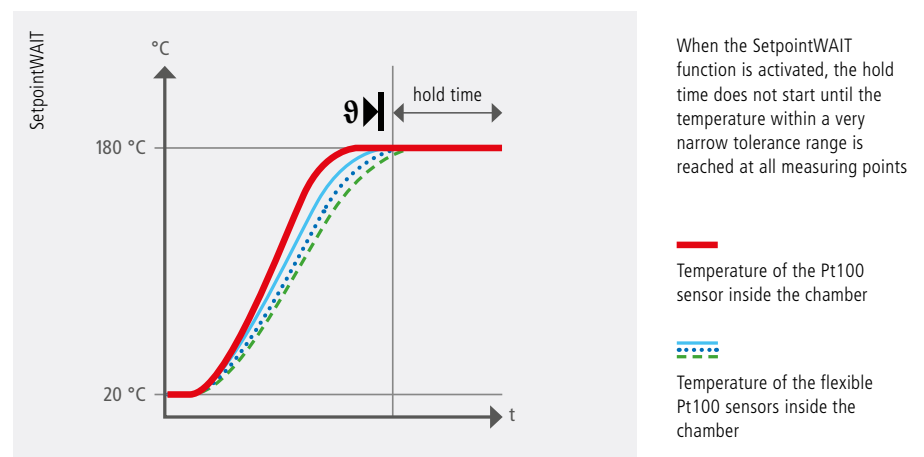
**STERILISER S** Medicine has the goal of protecting and saving lives. Therefore, disinfection of receptacles and instruments is not enough. The setpoint-dependent programme resume function SetpointWAIT of Memmert hot air sterilisers guarantees precise sterilisation times and the complete killing off of even the most resistant microorganisms. All Memmert sterilisers are classified as class IIb medical device.





## SetpointWAIT function

Exactly timed temperature control helps to save lives when it comes to sterilisation of instruments and laboratory equipment. Therefore, the SetpointWAIT function guarantees that the sterilisation time does not start before the compensation time is reached. When measuring with additional freely positionable Pt100 sensors (optional), reaching the set temperature at all measuring points on the chamber load is decisive for the continuation of the programme. Up to three measurements can be displayed directly on the ControlCOCKPIT or one measurement on an external measuring device or a 4 – 20 mA interface.



## Validation without problems

Particularly thanks to the SetpointWAIT function, Memmert hot air sterilisers comply with all strict requirements on quality assurance and can therefore be validated without problems. Besides the possibility to measure the temperature directly at the load inside the chamber (optional), the appliances completely document the entire process. In combination with the User-ID-Key for TwinDISPLAY appliances, the process-controlled door locking mechanism (optional) is the icing on the cake in terms of safety.



### The steriliser SN/SF/SNplus/SFplus is a medical device:

All Memmert sterilisers are classified as class IIb medical device. The appliances may be used for sterilising medical material through dry heat at atmospheric pressure. They are also suited without restriction for the special application of depyrogenisation with hot air.

## STERILISERS S

according to DIN 12880:2007-05, EN 61010-1 (IEC 61010-1), 61010-2-010 and 61010-2-40

Standard units are safety-approved and bear the test marks:



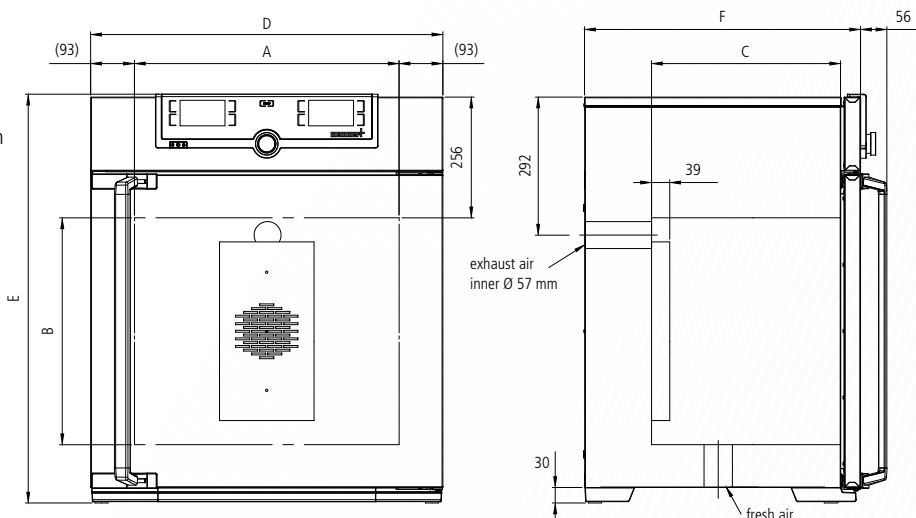
## Standard equipment

- Interior:** Stainless steel, material 1.4301 (ASTM 304), with all-round deep-drawn ribs to integrate the large-area heating with ceramic-metal sheath
- Internals:** Stainless steel grids, electropolished (sizes 30 and 55: 1 grid, sizes 75 – 750: 2 grids)
- Housing:** Textured stainless steel, rear zinc-plated steel, intuitively operated SingleDISPLAY or TwinDISPLAY (TFT colour display) with touchscreen (from size 450 two leaves)
- Fresh air:** Admixture of pre-heated fresh air by electronically adjustable air flap
- Connection:** Mains cable with plug (German type) CEE plug for 400 V
- Installation:** 4 feet; sizes 450 and 750 mounted on lockable castors

Interfaces:



(only TwinDISPLAY)



Model sizes/Description			30	55	75	110	160	260	450	750
Stainless steel interior	Volume	approx. l	32	53	74	108	161	256	449	749
	Width (A)	mm	400	400	400	560	560	640	1040	1040
	Height (B)	mm	320	400	560	480	720	800	720	1200
	Depth (less max. 39 mm for fan) (C)	mm	250	330	330	400	400	500	600	600
	Stainless steel grids, electropolished (standard equipment)	number	1		2					
	Max. number of grids/shelves	number	3	4	6	5	8	9	8	14
	Max. loading per grid/shelf	kg	20						30	
	Max. loading of chamber	kg	60	80	120	175	210	300		
Textured stainless steel exterior	Width (D)	mm	585	585	585	745	745	824	1224	1224
	Height (size 450, 750 with castors) (E)	mm	704	784	944	864	1104	1183	1247	1726
	Depth (without door handle), door handle + 56 mm (F)	mm	434	514	514	584	584	684	784	784
Further data	Electrical load at 230 V , 50/60 Hz	approx. W	1600	2000	2500	2800	3200	3400	–	
	Electrical load at 115 V, 50/60 Hz	approx. W	1600	1700	1800				–	
	Electrical load at 400 V and 3 x 230 V w/o neutral, 50/60 Hz	approx. W	–						5800	7000
	Working-temperature range	°C	at least 5 (SN/SNplus) 10 (SF/SFplus) above ambient temperature to +250							
	Setting temperature range	°C	+20 to +250							
	Setting accuracy	°C	up to 99.9: 0.1 / from 100: 0.5							
Packing data	Net weight	approx. kg	46	57	66	74	96	110	161	217
	Gross weight (packed in carton)	approx. kg	62	76	85	99	122	161	227	288
	Width	approx. cm	66	73	73	83	83	93	133	133
	Height	approx. cm	89	95	113	105	130	138	144	191
	Depth	approx. cm	65	67	67	80	80	93	105	105
<b>Order No. Sterilisers</b> S = Steriliser N = Natural convection F = Forced air circulation plus = Model with TwinDISPLAY			SN30	SN55	SN75	SN110	SN160	SN260	SN450	SN750
			SN30plus	SN55plus	SN75plus	SN110plus	SN160plus	SN260plus	SN450plus	SN750plus
			SF30	SF55	SF75	SF110	SF160	SF260	SF450	SF750
			SF30plus	SF55plus	SF75plus	SF110plus	SF160plus	SF260plus	SF450plus	SF750plus



Options	30	55	75	110	160	260	450	750
Voltage 115 V, 50/60 Hz	X2						–	
Extended overtemperature protection by additionally integrated Pt100 sensor for independent temperature monitoring for models SN/SF	A6							
Full-sight glass door (4-layer insulating glass)	B0							
Interior lighting for observing the load	R0							
Chamber modification for the application of reinforced perforated stainless steel shelves or stainless steel grids (bearing rails mounted in the working chamber) – includes replacement of 2 standard grids by 2 reinforced grids	–						K1	
Fresh-air filter (filtration efficiency 80 %) mounted at the appliance bottom (for SF/SFplus). For sizes 30 – 260 castor frame or subframe necessary – see page 28	R8							
Entry port, 23 mm clear diameter, for introducing connections at the side, can be closed by flap, standard positions								
left centre/centre left centre top right centre/centre right centre top								
Entry port, 23 mm clear diameter, for introducing connections, can be closed by flap in special positions (please, state location)								
left right rear								
Entry port, 14 mm clear diameter, can be closed by flap, in special positions at the back (please, state location)	D6							
Entry port, 38 mm clear diameter, can be closed by flap, in special positions at the back (please, state location)	F7							
4 – 20 mA current loop interface (0 to +260 °C $\pm$ 4 – 20 mA)								
Temperature controller actual value Temperature of a Pt100 sensor positioned flexibly in chamber for external temperature monitoring (max. 1 SingleDISPLAY, max. 3 TwinDISPLAY)								
Fan speed monitoring with switching off the heating and with alarm in case of failure optional for SFplus only	V4							
Works calibration certificate for 3 temperatures: +160 °C, +180 °C, +250 °C Standard works calibration certificate (measuring point chamber centre) at +160 °C	D00132							

Accessories	30	55	75	110	160	260	450	750
Stainless steel grid, electropolished (standard equipment)	E28884	E20164		E20165		E28891	E20182	
Additional reinforced stainless steel grid, electropolished, max. loading 60 kg; from size 450 with guide bars and fixing screws (only in connection with option K1). Please consider max. loading of chamber		–		E29767		E29766	B32190	
Perforated stainless steel shelf	B29727	B03916		B00325		B29725	B00328	
Additional reinforced stainless steel shelf, max. loading 60 kg; with guide bars and fixing screws (only in connection with option K1). Please consider max. loading of chamber			–				B32191	
Stainless steel slide-in drip tray, 15 mm rim (may affect the temperature distribution) – cannot be used in connection with option K1	E02070	E02072		E02073		E29726	E02075	
Max. loading per slide-in drip tray (kg)		1.5		3		4	8	
Stainless steel slide-in drip tray, 15 mm rim, with guide bars and fixing screws (can be used only in connection with option K1)			–				B32763	
Stainless steel bottom drip tray, 15 mm rim (may affect the temperature distribution) – cannot be used in connection with option K1	B04356	B04358		B04359		B29722	B04362	
Max. loading per bottom drip tray (kg)		1.5		3		4	8	
Stainless steel bottom drip tray, 15 mm rim (can be used only in connection with option K1)			–				B34055	
Wall bracket for wall mounting	B29755	B29756	B29757	B29758	B29759		–	
Guarantee extension by 1 year	GA1Q5						GA2Q5	